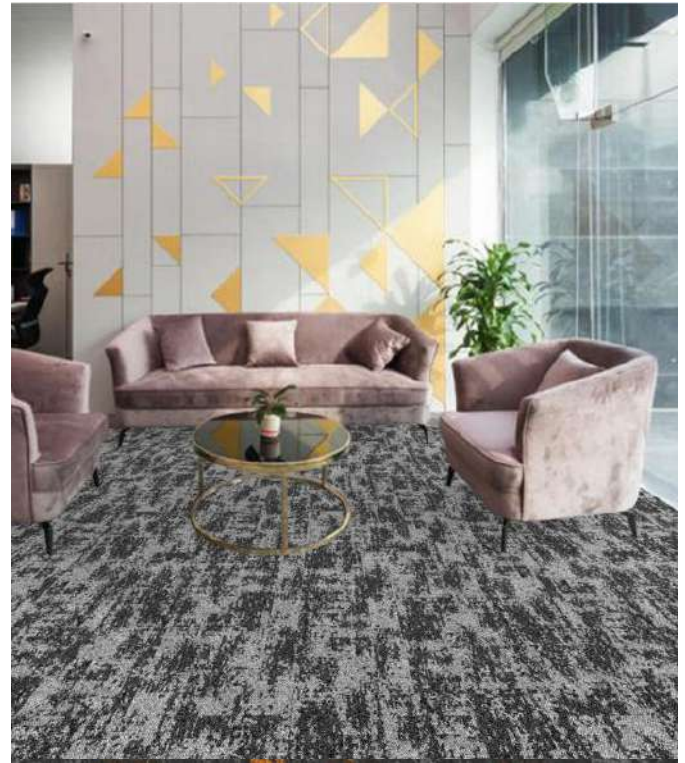


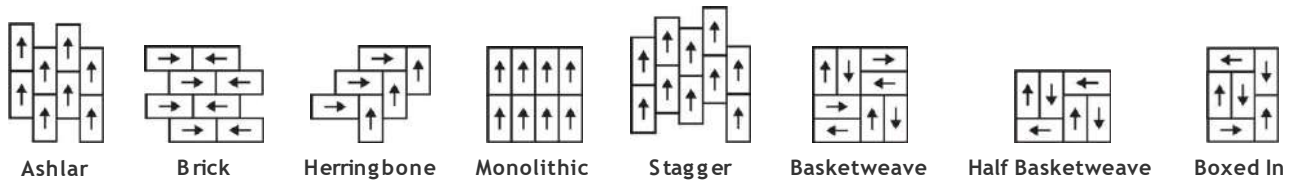
# Magnifyde Floorings

## Modular Plank

Product Type	Carpet Plank	
Collection	Decorous	
Style Number	268	
Construction	Multi-Level Pattern Loop	
Fibre	Nylon	
Dye Method	Solution Dyed	
Primary Backing	Synthetic	
Secondary Backing	PVC+ Glass Fibre	
Protective Treatments	Soil Protection	
	u.s.	metric
Product Size	9.8 in x 39.3 in	25 cm x 100 cm
Area Per Box	54 ft <sup>2</sup>	5.0 m <sup>2</sup>
Pieces Per Box	20 pcs	
Gauge	1/12 in	47.2 per 10 cm
Stitches	8.0 per in	32.5 per 10 cm
Average Density	6581 oz/yd <sup>3</sup>	0.243 g/cm <sup>3</sup>
Kilotex		9.16
Total Thickness	0.220 in	5.59 mm
Tufted Weight	22 oz/yd <sup>2</sup>	770.4 g/m <sup>2</sup>



### Recommended Installation Method



### Data + Testing

Radiant Panel (Astm BS 4790-1987)	Class I
Nbs Smoke	Less Than 0.5 mg/m <sup>2</sup>
Electrostatic Propensity Cri Green	Less Than 3.5 kv
Label Plus (Glp) Pill Test	GLP100263
Ada Compliance	Pass*
	>0.6, Meets the recommended static coefficient of friction for ADA walking surfaces and accessible routes*

Test Reports may be included or listed by the manufacturing/inventory style number as opposed to the noted selling style number.

### Warranties

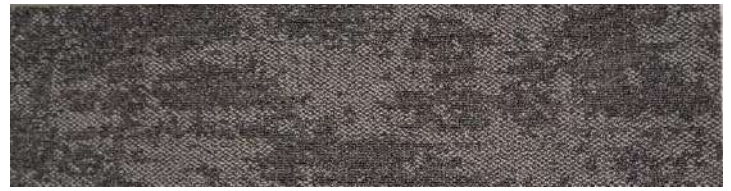
5 Year Commercial Limited

# Magnifyde Floorings

Available Colorways



268N



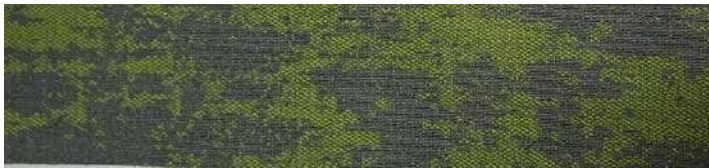
263N



265N



269N



266N



264N



267N



## Additional Information

To learn more about the products rendering images and our Environmental Guarantee, please visit [magnifydefloorings.com](https://magnifydefloorings.com)  
 Stock available at India Warehouse - Pune, Bangalore, and Gurgaon

## Features & Certifications

