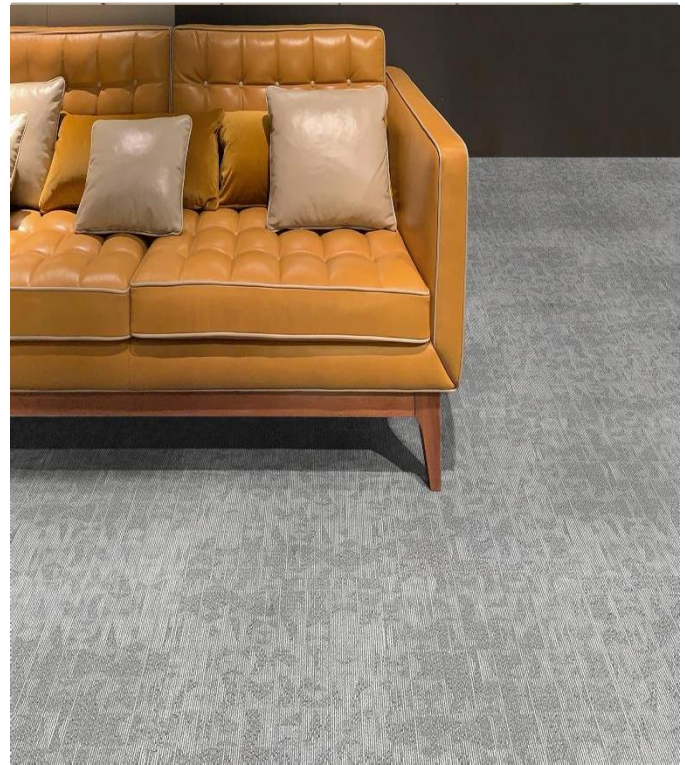


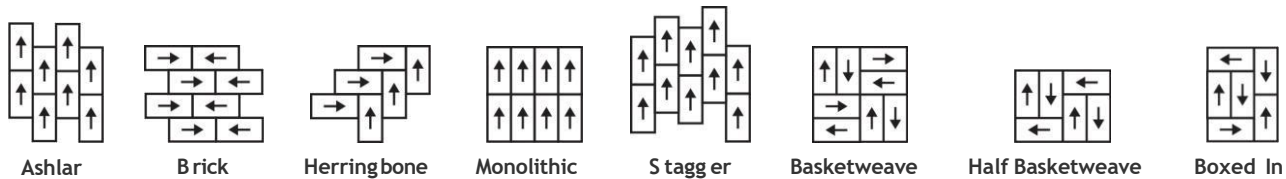
Magnifyde Floorings

Modular Tile

Product Type	Carpet Tile	
Collection	Mercury	
Style Number	Star-8015	
Construction	Multi-Level Pattern Loop	
Fibre	Nylon	
Dye Method	Solution Dyed	
Primary Backing	Synthetic	
Secondary Backing	Ecoback+ Glass Fibre	
Protective Treatments	Soil Protection	
	u.s.	metric
Product Size	-	50 cm x 50 cm
Area Per Box	54 ft ²	5.0 m ²
Pieces Per Box	20 pcs	
Gauge	1/12 in	47.2 per 10 cm
Stitches	8.0 per in	32.5 per 10 cm
Average Density	6581 oz/yd ³	0.243 g/cm ³
Kilotex		9.16
Total Thickness	0.220 in	5.59 mm
Tufted Weight	22 oz/yd ²	770.4 g/m ²



Recommended Installation Method



Data + Testing

Radiant Panel (Astm BS 4790-1987)	Class I
Nbs Smoke	Less Than 0.5 mg/m ²
Electrostatic Propensity Cri Green	Less Than 3.5 kv
Label Plus (Glp) Pill Test	GLP100263
Ada Compliance	Pass*
	>0.6, Meets the recommended static coefficient of friction for ADA walking surfaces and accessible routes*

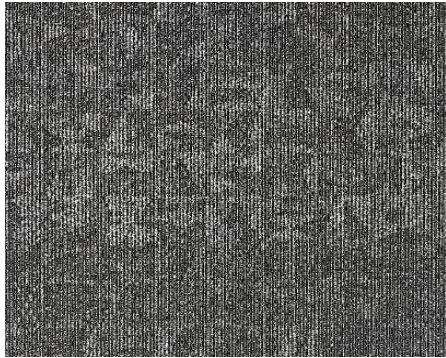
Test Reports may be included or listed by the manufacturing/inventory style number as opposed to the noted selling style number.

Warranties

10-Year Commercial Limited

Magnifyde Floorings

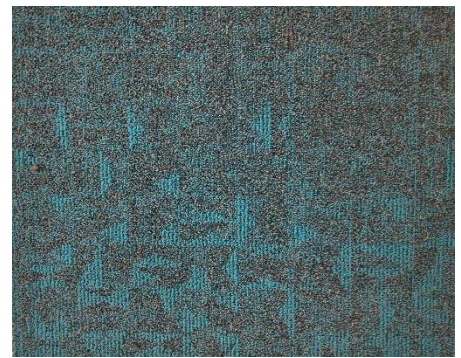
Available Colorways



7102- Grey



L-691 Green



L680- TEAL



L370 - BLUE



L493 - RUSB



Additional Information

To learn more about the products rendering images and our Environmental Guarantee, please visit magnifydefloorings.com
Stock available at India Warehouse - Pune, Bangalore, and Gurgaon

Features & Certifications

